

Product: PCC022  
 Product Size: Size S: chest=104cm; Body length=68cm ; Size M: chest=109cm; Body length=70.5cm  
 Size L: chest=114cm; Body length=73cm ; Size XL: chest=119cm; Body length=75.5cm  
 Size 2XL: chest=124cm; Body length=77cm ; Size 3XL: chest=129cm; Body length=78.5cm  
 Size 4XL: chest=134cm; Body length=80cm ; Size 5XL: chest=139cm; Body length=81.5cm  
 Decoration Options: Sublimation

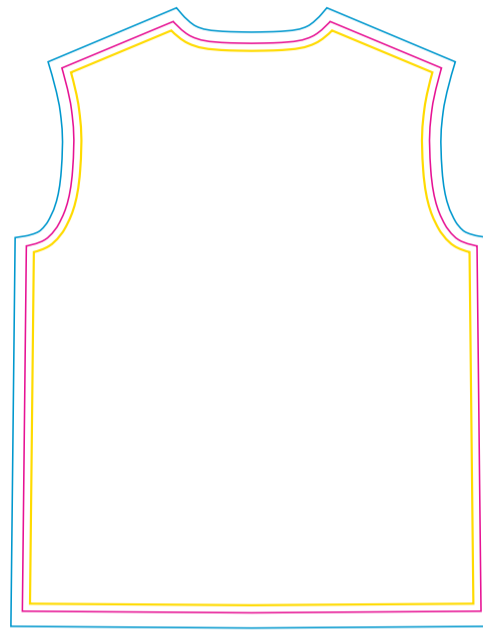
## Size:L

Front panel



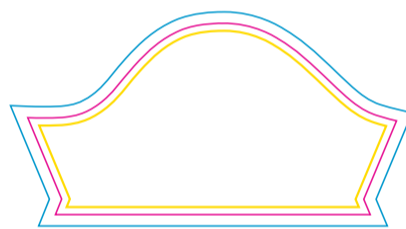
Shown at 10% actual size  
 Print size: 607.3mm(w) x 782.1mm(h)

Back panel



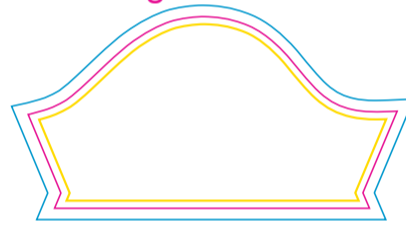
Print size: 606.7mm(w) x 781.7mm(h)

Left sleeve



Print size: 487.8mm(w) x 253mm(h)

Right sleeve



Print size: 488.1mm(w) x 253.3mm(h)

Collar rib



Print size: 517mm(w) x 47.7mm(h)

- Knife line
- Safe print area
- Bleed area

\*Please note, some information on tags may be covered by the stitching seam connecting it to the garment. Please take note when designing your tag. This applies to the neckline, shoulder seam, side seam, sleeves or bottom hem.

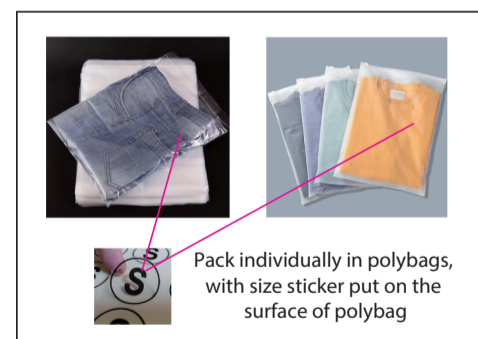
### Size splits

Men's size	S	M	L	XL	2XL	3XL	4XL	5XL
order quantity								

Ladies' size	L8	L10	L12	L14	L16	L18
order quantity						

Unisex size	S	M	L	XL	2XL	3XL	4XL	5XL
order quantity								

### LOGO refer colour



label type	√ if required (customized brand label will cause additional cost, our product included standard size label and wash label defaulty)	
brand label		
size label		
wash label		

